



NAMBU Co., Ltd.

LIQUID CLEANER

Using compressed air, LIQUID CLEANER & SUCTION DEVICE,
available to transfer, collect, suck, and discharge materials,
especially for liquid (cutting oil, oil, chip mixture, and sludge mixture)



SD400D H35 TC100

Features

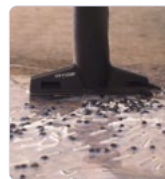
- It is easy to use and there is no trouble.
- As there is no rotating channel and it doesn't need electricity, there is no risk of explosion.
- When it sucks certain amounts, the suction automatically is turned off by the shut-off valve.
- Alternative containers may be used (200 Liter Drum).
- Compressed air is used as a power source.
- It is possible to suck and discharge.(TC50 / TC100)

Applications

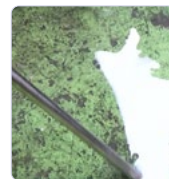
It can be used in all fields where liquid cleaning is required, especially for transporting materials such as cutting oil, oil chip mixture, sludge mixture, and residual water.



Cutting oil



Oil chip mixture



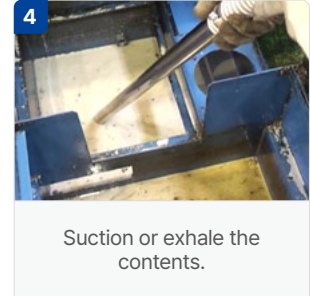
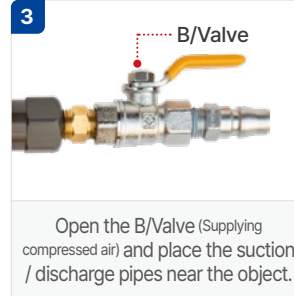
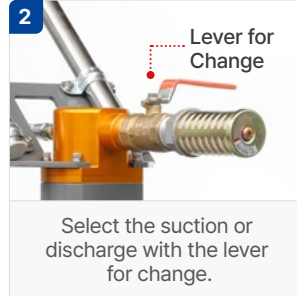
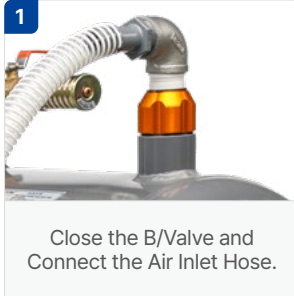
Liquid



Removal
cutting oil

How to Use

Please read this user's manual prior to operating this product.



Condition for Use

- The pressure of compressed air should be less than 7kg/cm².
- Compressed air supply of Air Inlet Hose should be more than 1,200ℓ/min; the power should be more than 7.5 kw (10HP); and, inside diameter of the air hose should be more than Ø8.
- The shorter and larger hose is and the higher pressure is, the better performance has.
- When using a secondary tank, it is more efficient.
- When discharging, the air pressure should be 0.5~0.6 kg/cm².

How to install the Drum (200ℓ)

- Hose Ass'y (H35) assembles on the large Cap of the upper side.
- Suction Device (SD400D) assembles on the small Cap of the upper side.
- When attaching Drain V/V, it should be installed on the bottom side.



Precautions

- Passing diameter of solid matter should be Ø27 and the materials having viscosity of grease is impossible to suck.
- After using it, empty the inside of the tank.
- Certain kinds of acid should not be used. (It is shortened the product life cycle due to corrosion)
- Be careful that the liquid might spurt some mist toward the Silencer.
- Shut-Off V/V should be kept clean.
- If the liquid releases toward the Silencer, use it after emptying the tank.
- If the suction is poor,

- Check the condition for use
- Inspect or change the Silencer
- Check the inside of the inlet/outlet (H35)
- After inspecting the O-ring of the assembly section, change it.
- Check the operational status of the Shut-Off V/V

- Be careful that the Drum (200ℓ) may be dented when using it.
(Recommendation: less than 7 kg/cm²)
- Be careful that it may be flown backward if the lever for change is for discharging (TC50), or the end of the pipe is lower than the Drum (if cutting off air supply).

Specification

Category		Degree of Vacuum			Air Consumption		Liquid Suction Rate
kg/cm ²	PSI	mmHg	mmAq	InchAq	ℓ/min	SCFM	ℓ/min
4	57	253	3.439	135.4	756	26.5	80
5	71	315	4.284	168.7	877	30.9	90
Dimension L×W×H		TC50 : 790×460×890, 20kg			TC100 : 736×560×890, 33kg		

- Weight : 20Kg · Lift : 3M · Horizontal transfer : 15M