

CE ISO 9001

# USER'S MANUAL



**NAMBU CO., LTD.**

# CONTENTS

I . CHARACTERISTIC

II . USE OF CONDITION

III. COMPOSITION DRAWING

IV. FUNCTION AND HOW TO USE

IV-1. SUCTION

IV-2. BLOW

IV-3. SUCTION & BLOW

IV-4. MODEL'S SHAPE AND FUNCTION

IV-5. OPERATING METHOD OF CARTRIDGE FILTER  
CLEANING DEVICE

IV-6. THE WAY OF COLLECTION

V . AIR PRESSURE V.S VACUUM DEGREE & AIR CONSUMPTION

VI. APPLICATION

VII. OTHER APPLICATION

VIII. CAUTION

IX. TROUBLE SHOOTING

X. TEST REPORT

XI. CERTIFICATE OF GUARANTEE

## I. CHARACTERISTIC

### ► Functions

- Three function such as suction, blow, and suction-blow.
- Suitable for automation system with its quick response.
- Possible to select one of the three functions and control strengith.
- Easy to transport, collect and remove solid, liquid, and gas.
- Possible to change the shape of mouth depending on its applications.
- It can remove foreign materials from the deep and recessed crevices.
- It is necessities for the improvement of environment and a multifuncational air gu.

### ► Economics

- Low maintenance cost as it is a semi-permanent product.
- Tank is optional. Replaceable container can be used.

### ► Safety

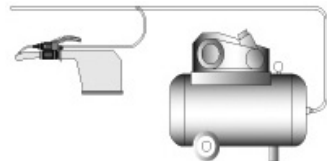
- Free from electric shock as it does not use electricity.
- Non-corrective, and uses material harmless to the environment and the human bo
- Super Gun uses compressed air for power source.
- Therefore it does not generate heat even it is used for a long time.

### ► Convenience

- Simple structure and convenient to use.
- Easy to move as it is light and small.

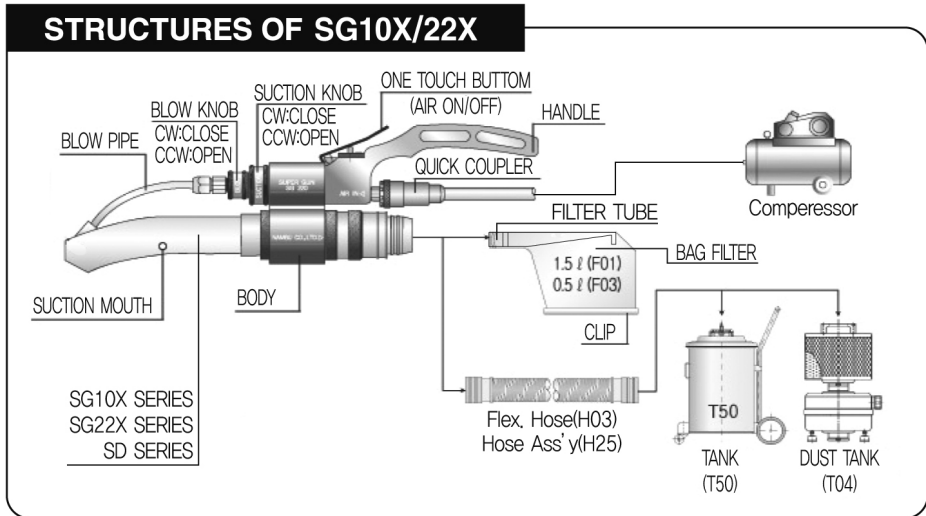
## II. USE OF CONDITION

| Compressor Specification |                                       |                                       |
|--------------------------|---------------------------------------|---------------------------------------|
| Model                    | SG22X, SD220, SD360                   | SG10X, SD100                          |
| Output                   | More than 10HP(7.5Kw)                 | More than 5.5HP(5.5Kw)                |
| Pressure                 | More than 4kg/cm <sup>2</sup> (57PSI) | More than 4kg/cm <sup>2</sup> (57PSI) |
| Air Consumption          | More than 950 l /min                  | More than 580 l /min                  |
| Air hose                 | φ 12                                  | φ 8                                   |
| Tank Capacity            | More than 150 l                       | More than 150 l                       |



# USER'S MANUAL

## III. COMPOSITION DRAWING



## IV. FUNCTION AND HOW TO USE

### IV-1. SUCTION

1. Check the position of the Suction & Blow Knob to make sure it is closed
  - If it is not closed, rotate it to the closed position
2. Connect  $\phi 12$  Air hose to Air Inlet port and use after confirming No-Air Leakage.
  - If it uses one touch coupler, disconnect the one touch fitting and connect the one touch coupler (it uses standard screw size: PT1/4)
3. Open the Suction Knob
  - Adjust the suction knob to the desired power within a range of 1/2 rotation, (Max : 1/2 rotation)
4. Put Suction mouth close to the objects and switch on/off one touch button repeatedly.

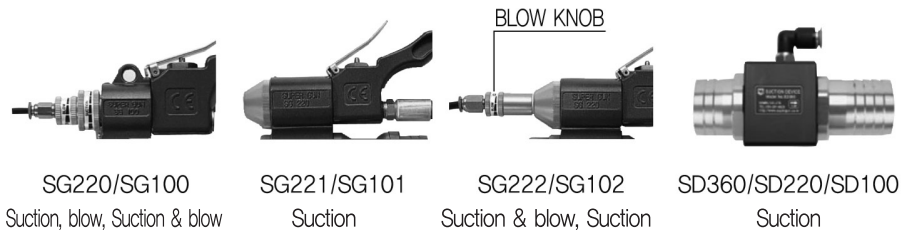
### IV-2. BLOW

1. Repeat the process 1) and 2) above.
2. Open the Blow Knob
  - Adjust the blow knob to the desired power within a range of 1/2 rotation. (Max : 1/2 rotation)
3. Put suction mouth close to the objects and switch on/off touch button repeatedly.

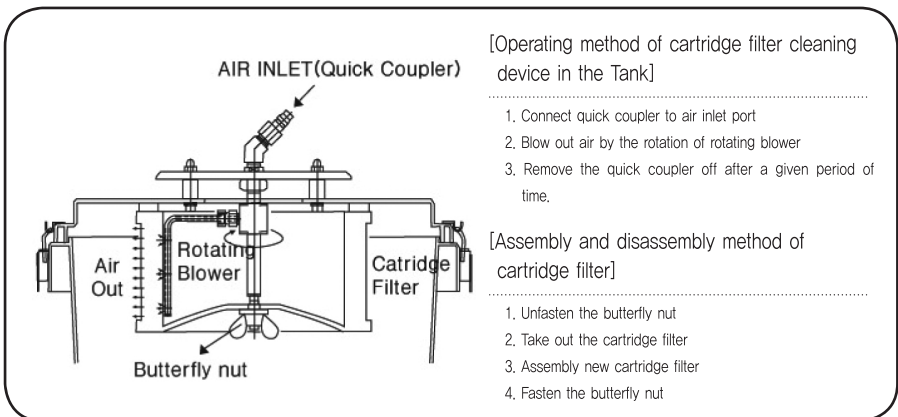
## IV-3. SUCTION & BLOW

1. Same as 1) and 2) above.
2. Open Suction Knob within 1/2 rotation
3. Put Suction mouth close to the objects and switch on/off touch button repeatedly (Max 1 rotation)
  - If you use function of suction & blow together, suction power must be stronger than blow power.
4. Application for simultaneous use of Suction & Blow function
  - Inside Conner, blocked hole not to be in suction power's reach.
  - In case any liquid has foreign material, Supergun can suck liquid and foreign material simultaneously by making liquid circulate and mixed with foreign material.

## IV-4. MODEL'S SHAPE AND FUNCTION



## IV-5. CARTRIDGE FILTER CLEANING DEVICE(T50)

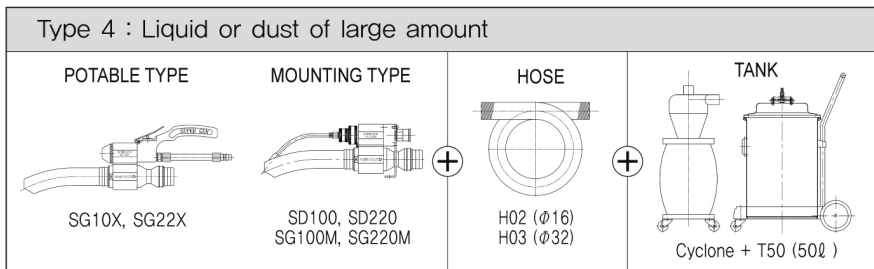
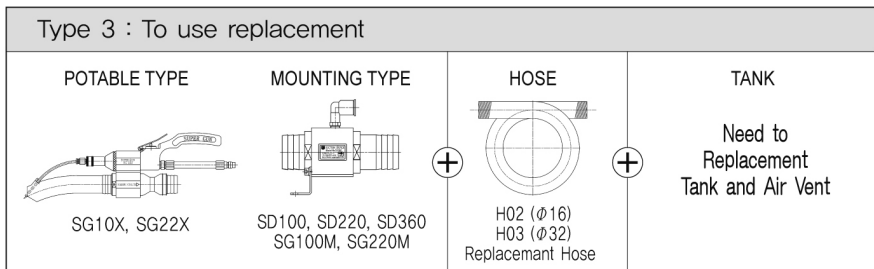
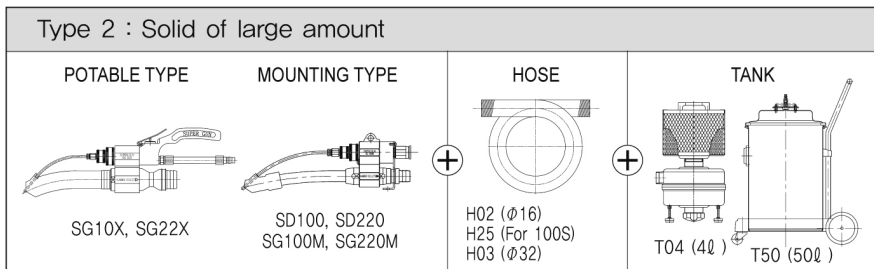
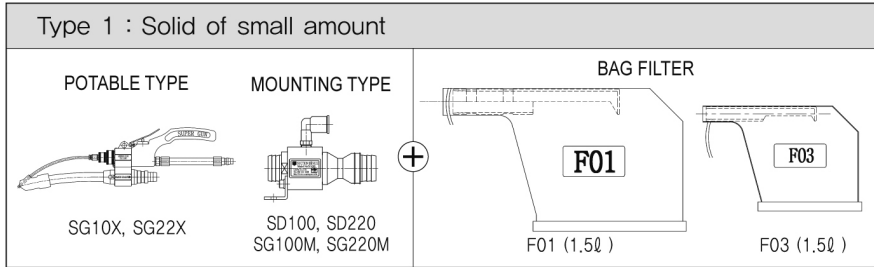


### ※ Caution

Please operate it after ensuring that the tank cover is fixed with a lock

# USER'S MANUAL

## IV-6. THE WAY OF COLLECTION



## V. AIR PRESSURE V.S VACUUM DEGREE & AIR CONSUMPTION

| MODEL              |      | SG10X         |       |                 |      | SG22X         |       |                 |      | SD360         |      |                 |      |
|--------------------|------|---------------|-------|-----------------|------|---------------|-------|-----------------|------|---------------|------|-----------------|------|
| Division           | Unit | Vacuum Degree |       | Air Consumption |      | Vacuum Degree |       | Air Consumption |      | Vacuum Degree |      | Air Consumption |      |
| kg/cm <sup>2</sup> | PSI  | mmHg          | mmAq  | ℓ /min          | SCFM | mmHg          | mmAq  | ℓ /min          | SCFM | mmHg          | mmAq | ℓ /min          | SCFM |
| 4                  | 57   | 250           | 3,400 | 580             | 21   | 110           | 1,496 | 950             | 34   | 45            | 612  | 715             | 25   |
| 5                  | 71   | 290           | 3,944 | 700             | 25   | 140           | 1,904 | 1,150           | 41   | 56            | 760  | 910             | 41   |

- Inner Diameter : SG(D)10X : Φ10 / SG(D)22X : Φ22 / SD360 : Φ36
- Vacuum Degree of SD Series are more powerful than SG series (20~30%)

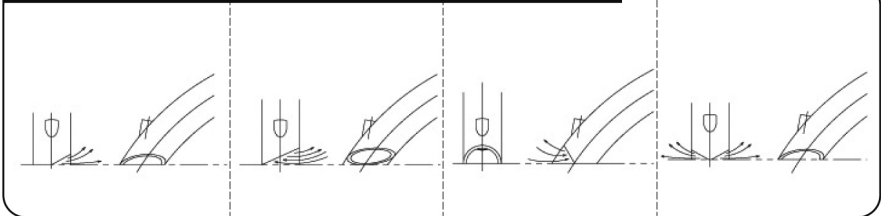
## VI. APPLICATION

1. Plastic plant textile plant, electronic parts, manufacturing line foundary shop, sand or girt blasting, line welding shop,etc.
2. Shipbuilding, plant bloct, oil tanker,ship machine room,and the inside of the tank,etc.
3. Places where electric spark is susceptible.
4. In case of cleaning the Floating particles and accumulated matters inside of Liquid container.  
It is possible to suck as mixing with liquid by the both function of blow and suction.
5. Automation application system.
6. Places requiring material transportation dust collection and dust removal.
7. Painting Room, Final Finishing Room
8. Filed welding which requires removal of water from bucket.
9. Foods, bakery, flour, cosmetics,woodworking, chemical plants, etc.
10. Car repair and cleaning shop.
11. It is suitable for the place where foreign materials of small quantity affect on the products and working spaces is very narrow.
12. It's suitable for clean room equivalent to Class 30 since it has highly efficient filter can remove even 99.97%(0.3μm)of minute dust.

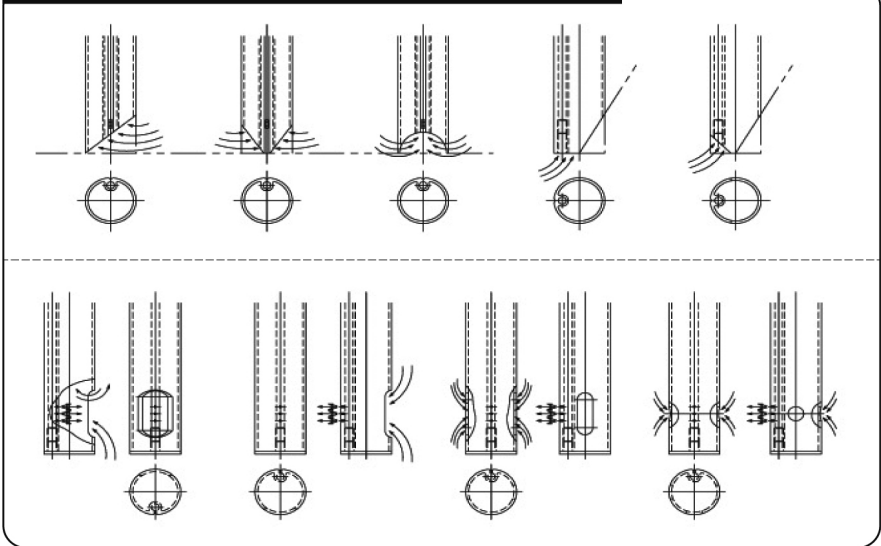
## VII. OTHER APPLICATION

1. If it is installed at the vicinity of the welding area, it can discharge harmful gas.
2. Exclusive Tank is optional, Replaceable container can be used.
3. It is possible to remove the sludge and floating matters in regular interval by installing Timer.
4. In case liquid has solid material, It is possible to collect solid and liquid respectively as solid can be separated from liquid outside after collecting together firstly.(Use filter bag in the collection tank)
5. It can be also used for dust collection tank using both electric and compressed air if it is connected to the dust collection tank of general vacuum cleaner.
6. Mouth application

### SG22X SHORT MOUTH APPLICATION



### SG220B LONG MOUTH APPLICATION





## VIII. CAUTION

- ▶ Please read this user's manual before you use this products and follow the safety caution.
  1. Don't operate the suction function without Bag Filter or Flex Hose.
  2. Never aim the Air Blow of supergun at person, it can cause injury.
  3. Don't throw or step on the super gun while using
  4. Don't use Bag Filter(F01/F03)directly when using for wet process.
  5. Our company is no responsibility for damage caused by interntional disassembling and reassembling.  
(Please inform any local branch of our company about damage or trouble occurred on transporting.
  6. Please wear the earplug when you operate the supergun for many hours.
    - Noise : (85db at air 5kg/cm<sup>2</sup>), 110db at air 9kg/cm<sup>2</sup>)
  7. Don't use if people approaches the outlet.
  8. When sucking the liquid, use special T50 tank, If ti is not used, keep is after cleaning it with cartridge filter.

## IX. TROUBLE SHOOTING

- ▶ loss of suction power
  1. Check if suction mouth and an outlet have been clogged.
  2. Check the Air pressure. (The proper pressure range : 5–9kg/cm<sup>2</sup>)
  3. Check the pressure vessel of the air compressor for its capacity.
    - SG220 : Use air compressor with 5HP over and hose φ12mm over and vessel volume 150ℓ over
    - SG100 : Use air compressor with 2HP over and hose φ8mm over and vessel volume 25ℓ over
  4. Check of Bag Filter for its proper air venting  
(when clogging found, clean or exchange the bag filter)
    - The expected life span of Bag filter ; About 750–950hours.

## X. TEST REPORT

|                       |  |
|-----------------------|--|
| Manufacture's Name    | Nambu Co., Ltd   |
| Manufacture's Address | #42-22, Palyong-Dong Changwon-City,<br>Gyeongnam, Korea(South) |
| Model/Type Reference  | Super Gun  |
| Serial Namber         |  |
| Test result           | P  |
| Date of Issue         |  |
| Tested by             |  |
| Approved by           | NAMBU CO., Ltd.  |

| Items                               | Condition | Operating of Knob    | Water level<br>(mm Aq) |
|-------------------------------------|-----------|----------------------|------------------------|
| Suction (4kg/cm <sup>2</sup> )      |           | P                    |                        |
| Air Blow (4kg/cm <sup>2</sup> )     |           | P                    | -                      |
| Suction Air Blow                    |           | P                    | -                      |
| Overpressure(11kg/cm <sup>2</sup> ) |           | P                    | -                      |
| One Touch Button                    |           | P                    | -                      |
| Qucik Coupler                       |           | P                    | -                      |
| Finishing                           |           | P                    | -                      |
| Noise                               |           | 4kg/ cm <sup>2</sup> |                        |
|                                     |           | 85db                 |                        |

### Note

1. Test item dose meet the requirement : P (ass)
2. Test item dose not meet the requirement : F (ait)
3. Test items dose not apply to the rtest object : N(A)

## IX. CERTIFICATE OF GUARANTEE

- In order to obtain the benefits of the optional One year Warranty, the original purchaser of the product must submit to Manufacturer or Local distributor within 1 year from the date of purchase this warranty registration form completed, dated, together with of Bill of sale.
- The period of guarantee  
Period of guarantee, This guarantee is effective for 1 years calculated from the date of supply of equipment by the supplier. No labour charge for any necessary repair will be Made to the purchaser for a period of 1 years from the date of supply by the supplier.
- Terms of warranty  
Any warranty conditions does not apply to accessory (Bang, filter, flexible hose, mouth Cartridge filter, Tank, Hose plug & socket, Rubber tube)
- Change for repair
  - If the equipment is not handled with reasonable care or is modified in any way
  - If any original component or Accessory has been replaced by any component or accessory of a type not recommended or approved by manufacture
  - If the equipment is not operated in accordance with the manufacture's instruction manual.
  - Any resulting damage of any nature (Carelessness on custody)
  - Any Supergun which, in our strict judgement, has been repaired, altered or modified by any facility or personnel not authorized.
  - Any Supergun which, in our strict judgement, has been subjects to neglect Abues, accident, tampering, or has had its serial number removed or defaced.
- Free of change for repair  
If your Supergun fails to function properly under normal use and within the manufacture's specification
- Warranty service outside The R.O.Korera  
Any request for service under this guarantee must be addressed to the supplier from whom equipment was purchased, If the equipment is purchased outside The R.O.Korera, a request for service may alternatively be made to the local Supergun distributor who will provide guarantee service subject to the limitations(including imitations as the period of the guarantee, payment for parts, labour etc) applied locally by that distributor.
- This guarantee together with reasonable evidence of the date of purchase must be produced whenever service under this guarantee is requested

SERIAL NUMBER :

PURCHASED DATE :

WHERE TO PURCHASE :

PERIOD OF GUARANTEE : 1 YEAR FROM PURCHASED DATE

Tel. +82-55-291-8620 / Fax. +82-55-291-8614  
Url : <http://www.supergun.co.kr>  
E-mail : [nambu@supergun.co.kr](mailto:nambu@supergun.co.kr)  
Address : 78Beongil 12, Pyeongsan-Ro, Uichang-Gu,  
Changwon-City, Gyeongnam, Korea(South)

- ❖ Thank you for choosing our product, we strive to have the highest quality control and strict inspections so that you will always be satisfied with our products.
- ❖ Super Gun is protected by the patent laws.
- ❖ The contents of this manual can be changed for improvement in performance without notice.